

LC Connector Products

Siemon LC products offer all the benefits of SC and ST connectors in a Small Form Factor (SFF), high-density design. LC adapter products are compatible with our popular MAX®, CT®, FOB and MX-SM® work area products and our telecommunications room products, providing a wide variety of installation options. All fiber adapters are “universal” and support either multimode or singlemode fiber connections. LC connectors take just 2 minutes to terminate, using the Siemon *LightSpeed*® Termination Kit with LC upgrade option. Both multimode solutions and singlemode products are available.

Simplex LC connectors terminate buffered fiber and help maintain proper bend radius requirements in tight spaces

LC multimode connectors terminate either 62.5/125µm or 50/125µm multimode fiber

LC connectors use the familiar “RJ” style latch found on copper modular plugs

Factory terminated LC duplex jumpers comply with TIA/EIA 568-b.3 and ISO/IEC 11801Ed 2.0 fiber performance specifications

Jumper combinations available include LC to LC, LC to SC, and LC to ST

Multimode LC connectors terminate in just 2 minutes using our *LightSpeed*® Termination Kit (with LC upgrade option) minimizing field installation labor

LightSpeed Termination Kit

LC Upgrade Kit

LC connectors are about half the size of SC duplex connectors, providing significantly greater density

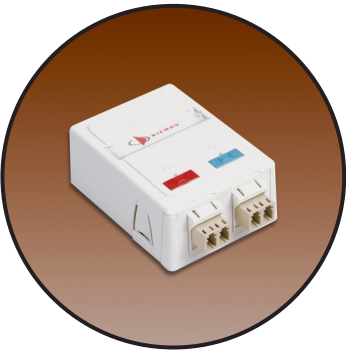
LC CT couplers with LC jumper

Use Siemon LightSpeed Termination Kit with LC upgrade option to terminate LC connectors in the field

Siemon LC System

FIBER PRODUCTS

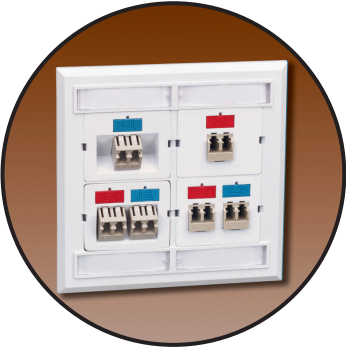
WORK AREA SOLUTIONS



Flat MAX LC Module in
MX-SM Box
(MX-SM2-XX) shown]



MAX® LC Modules in
MAX Faceplate
[MX-FP-S-04-XX) shown]



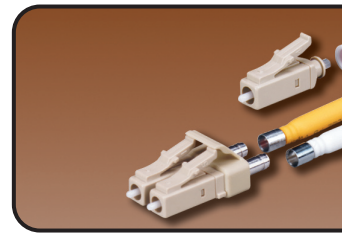
CT® Flat & Angled
LC Couplers in
CT Faceplate
[CT8-FP-XX) shown]



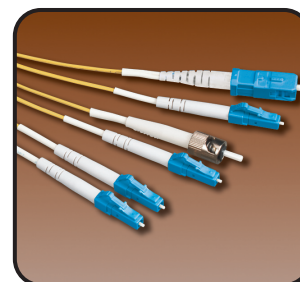
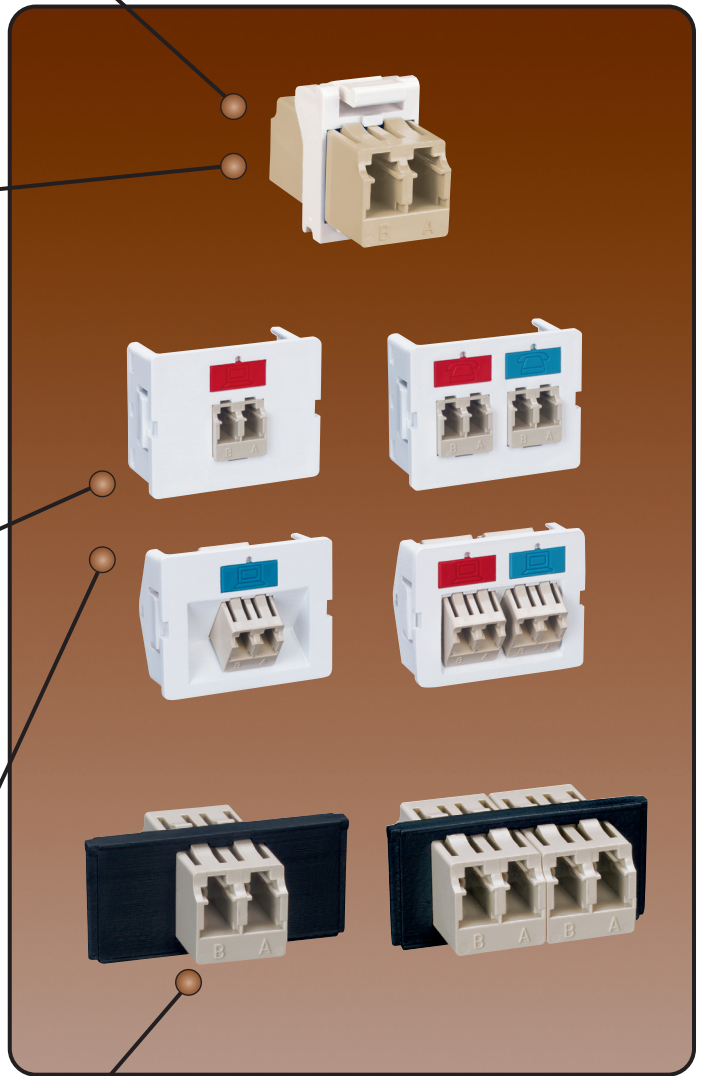
MAX & CT LC Modules in
Multi-user
Telecommunications
Outlet (MuTOA)
[CT-MMO-XX) shown]



FOB LC Bezels in
Fiber Outlet Box
[FOB2-XX) shown]



Simplex & Duplex LC Fiber



LC — Simplex

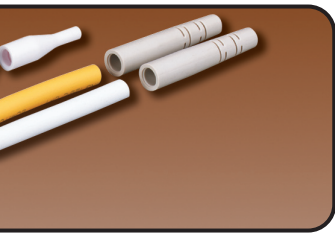


LC — LC Duplex

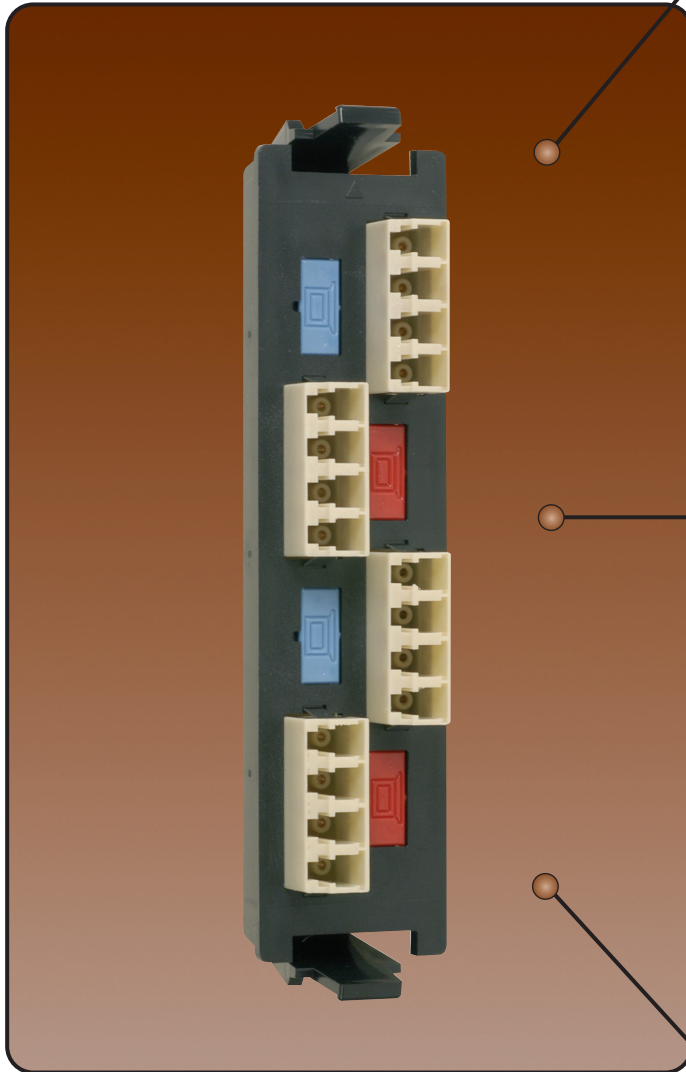
LightSystem®

Siemon LC System

TELECOMMUNICATION ROOM SOLUTIONS

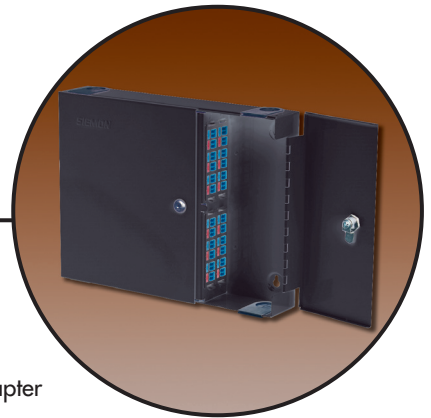


Field-Installable Connectors



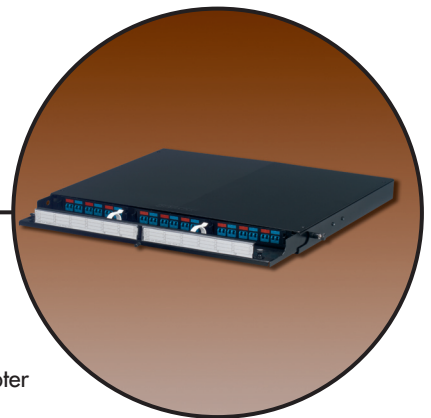
LC Quick-Pack™
Adapter Plate in
RIC3-48

The Rack Mount Interconnect Center provides high-density fiber management and distribution for up to 288 fibers in just 4 RMS. Available in 24- to 96-port, 36- to 144-port, 48- to 192-port and 72- to 288-port.



LC Quick-Pack Adapter
Plate in SWIC3

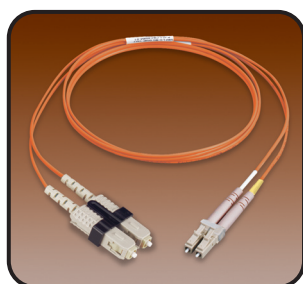
The Wall Mount Interconnect Center is designed to manage and connect up to 48 fibers. Available with or without integrated jumper guard and with various lock or latch options. A Mini-SWIC3 (SWIC3-M) is also available.



LC Quick-Pack Adapter
Plate in FCP3-DWR

The Fiber Connect Panel rack mount enclosures economically connect, protect and manage up to 36 fibers within one Rack Mount Space (RMS).

LC Jumpers



LC — SC Duplex



LC — ST Duplex

ORDERING INFORMATION

LC Work Area Solutions:

LC Field-Installable Connectors

Multimode

- FC1-LC-MM-B80LC Simplex connector, multimode, buffered fiber, beige boot
- FC2-LC-MM-J80LC Duplex connector, multimode, jacketed fiber, beige boot

Singlemode

- FC1-LC-SM-B02LC Simplex connector, singlemode, buffered fiber, white boot
- FC1-LC-SM-J02LC Simplex connector, singlemode, jacketed fiber, white boot

Note: Siemon LC jacketed fiber connectors require the use of 1.6mm jacketed fiber cables.

☺ Add "-B" to the end of part number for bulk pack (simplex: 100/box; duplex: 50/box)

LC MAX® Module

- MX-F1-LC(X)-(XX).....Flat module with 1 duplex LC adapter (2 fibers)

Use (X) to specify LC adapter color: blank = beige, U = blue

Use (XX) to specify color: 01 = black, 02 = white, 04 = gray, 20 = ivory, 25 = bright white, 80 = light ivory

Modules include dust caps, one color-matching, one red, and one blue icon per port

LC CT® Couplers

- CT-LC(X)-(XX).....Flat coupler with 1 duplex LC adapter (2 fibers)
- CT-LC(X)-LC(X)-(XX).....Flat coupler with 2 duplex LC adapters (4 fibers)
- CT-A-LC(X)-(XX).....Angled coupler with 1 duplex LC adapter (2 fibers)
- CT-A-LC(X)-LC(X)-(XX) ...Angled coupler with 2 duplex LC adapters (4 fibers)

Use (X) to specify LC adapter color: blank = beige, U = blue

Use (XX) to specify color: 01 = black, 02 = white, 04 = gray, 20 = ivory, 80 = light ivory

Couplers include one color-matching icon (clear for black), plus one red and one blue icon

LC Fiber Outlet Box (FOB) Bezels

- FOB-BZL-LC(X)1-011 Duplex LC adapter (2 fibers)
 - FOB-BZL-LC(X)-012 Duplex LC adapters (4 fibers)
- Use (X) to specify LC adapter color: blank = beige, U = blue

LC Modular Patching Solutions:

LC Quick-Pack™ Adapter Plates

- RIC-F-LC(X)12-016 duplex LC adapters (12 fibers)
 - RIC-F-LC(X)16-014 quad LC adapters (16 fibers)
 - RIC-F-LC(X)24-016 quad LC adapters (24 fibers)
- Use (X) to specify LC adapter color: blank = beige, U = blue

LightSystem® LC Jumpers

Duplex

- FJ2-LCLC(X)MM-(XX).....LC to LC multimode, orange jumper
- FJ2-LCULCU-(XX)LC to LC singlemode, yellow jumper
- FJ2-LCSA(X)MM-(XX)LC to ST multimode, orange jumper
- FJ2-LCUSAU-(XX)LC to ST singlemode, yellow jumper
- FJ2-LCSC(X)MM-(XX)LC to SC multimode, orange jumper
- FJ2-LCUSCU-(XX).....LC to SC singlemode, yellow jumper

Simplex

- FP1B-LC-(X)MM-01LC pigtail multimode, orange jacket, 900 micron, buffered, 1m (3.3 ft.)
- FP1B-LCU-01LC pigtail singlemode pigtail, yellow jacket, 900 micron, buffered, 1m (3.3 ft.)

Use (X) to specify multimode fiber type:

"-" = 62.5/125µm, orange jacket,
5 = 50/125µm (orange jacket)

Use (XX) to specify cable length:

01=1m (3.3 ft.), 02=2m (6.6 ft.), 03=3m (9.8 ft.), 05=5m (16.4 ft.)

Notes: Multimode performance: 0.15 dB typical insertion loss;
30 dB typical return loss;
Singlemode performance: 0.25 dB typical insertion loss;
57 dB return loss

Tools:

Siemon LightSpeed® Termination Kit

- FTERM-L2LightSpeed Termination Kit*
- FT-CKIT-L2Consumables Kit for FTERM-L2**

*All consumables including primer, adhesive, wipes, alcohol pads and polishing films are contained in the consumables kit and must be ordered separately. Contents of the FTERM Termination Kit are also available individually.

**This product contains material with a time and temperature sensitive shelf life.

LC Fiber Termination Upgrade Kit

- FTERM-LC.....LC Fiber Termination Kit (used in conjunction with FTERM-L2)

Note: Contents of FTERM-LC are also available individually.

For related product information request Spec Sheet(s):

- CT Faceplates (PROD-SS-CTF)
- MAX Modular Faceplates (PROD-SS-MXF)
- Fiber Outlet Box (PROD-SS-FOB)
- Multi-user Telecommunications Outlet (MuTOA) (PROD-SS-MMO)
- Wall Mount Interconnect Center (SWIC2) (PROD-SS-WI2)
- MX-SM Series Surface Mount Box (PROD-SS-MXSM)
- Rack Mount Interconnect Center (PROD-SS-RIC)
- LightSystem Jumper & Pigtails (PROD-SS-FJI)
- XGLO Jumpers and Pigtails (PROD-SS-LOF)
- LightSpeed Fiber Termination Kit (PROD-SS-FTK)

Because we continuously improve our products, Siemon reserves the right to change specifications and availability without prior notice.

CT®, XGLO™, LightSpeed®, LightSystem®, MAX®, Quick-Pack™ and SM® are trademarks of Siemon

North America

Watertown, CT USA
Phone (1) 860 945 4200 US
Phone (1) 888 425 6165 Canada

Europe/Middle East/Africa

Surrey, England
Phone (44) 0 1932 571771

Asia/Pacific

Shanghai, P.R. China
Phone (86) 21 5385 0303

Latin America

Bogota, Colombia
Phone (571) 657 1950